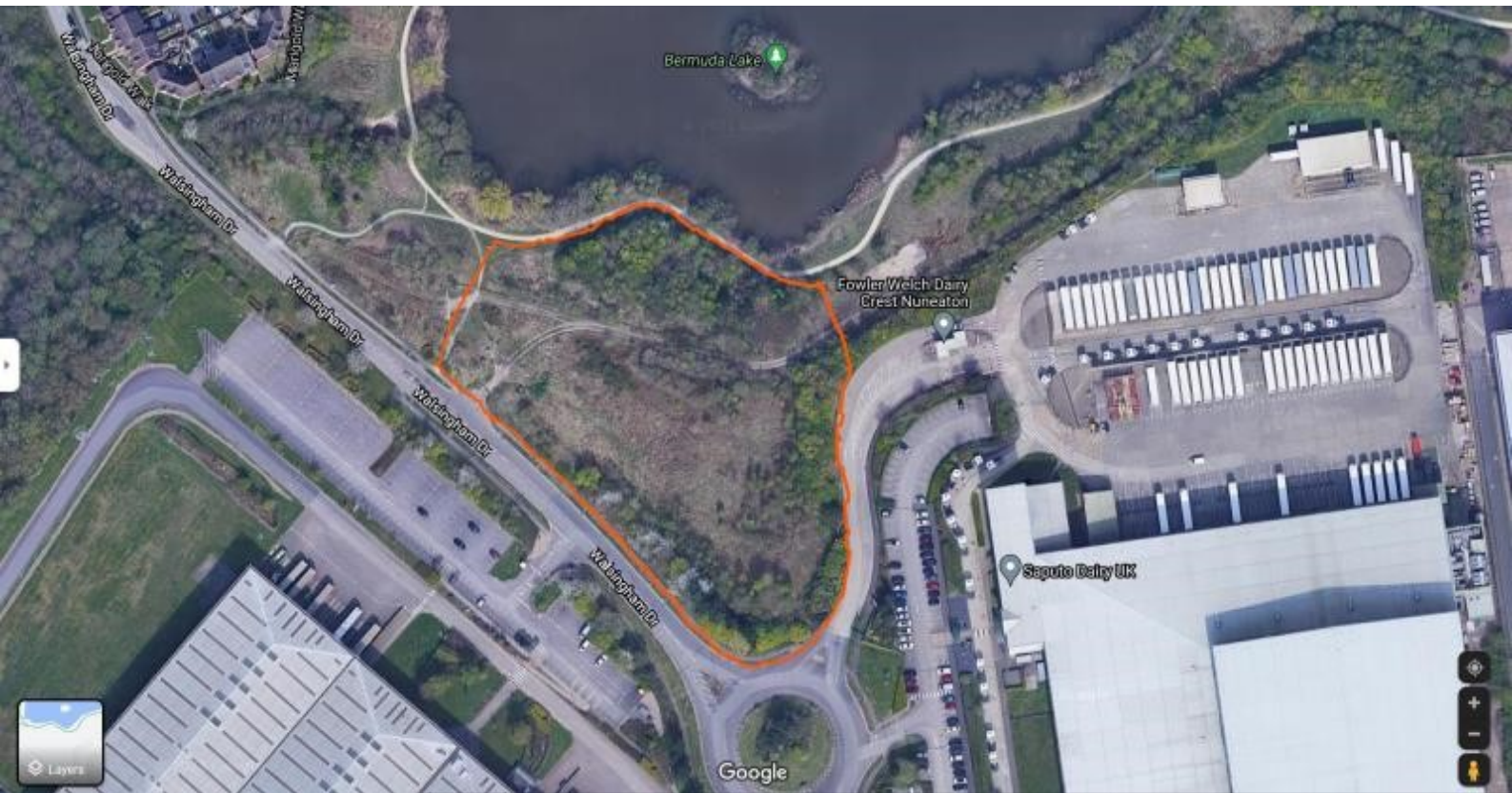


phillips
sutton

0116 2165144
www.phillipssutton.co.uk

T 0116 216 5144
E info@phillipssutton.co.uk
W www.phillipssutton.co.uk
A 14 Francis Street, Stoneygate, Leicester LE2 2BD
26a Ganton Street, London W1F 7QZ



Walsingham Bermuda, Walsingham Drive, Nuneaton CV10 7RW

Area: 2.2 acres
Rent: POA PAX
Rates: TBA
Service Charge: TBC
Legal Costs: Each party to be responsible for their own legal costs.

Viewing: Strictly by appointment.

Contact:



Sam Sutton
07794081052
ssutton@phillipssutton.co.uk



Brodie Faint
07852529977
bfaint@phillipssutton.co.uk

Location:

The site is located on the well established Bermuda Industrial Estate, a short distance from J3 of M6, accessed via the A444.

Key Features:



Area-Acres
20,000 sq ft upwards



Warehouse
Suitable on a pre let basis



Motorway Access
10 minutes drive to J3 of M6



Availability
To suit occupiers requirements



Location
Established industrial estate

0116 216 5144

info@phillipssutton.co.uk

www.phillipssutton.co.uk

14 Francis Street, Stoneygate, Leicester LE2 2BD

Misrepresentation Act, 1967. Phillips Sutton Associates for themselves and for the vendors or lessors of this property whose agents they are given notice that: (i) the particulars are set out as a general outline only for the guidance of intended purchasers or lessees, and do not constitute part of; an offer or contract; (ii) all descriptions, dimensions, reference to condition and necessary permissions for use and occupation, and other details given without responsibility and any intending purchasers or tenants should not rely on them as statements or representations of fact but must satisfy them by inspection or otherwise as to the correctness of each of them; (iii) no person in the employment of Phillips Sutton Associates has any authority to make or give any representation of warranty whatever in relation to this property.